

Macdonald Quick Action Couplings

P
A
G
E

...built to take the pressures!



The Macdonald quick action couplings are designed for high pressure compressed air or inert gas. They are widely used in Oil Refineries, Chemical Plants for Nitrogen Service and the Engineering Industry. They are also used with Pneumatic tools and for Fire Hose reel service where safety is a prime concern.

BACK TO

PLEASE SEE FOLLOWING PAGES FOR FURTHER DETAILS

CATALOGUE

The MacDonald bayonet couplings are quick, safe and reliable and allow effortless separation without the risk of accidental disconnection.

DESCRIPTION

MALE COUPLING has sliding sleeve and is available with Hose End (HM) Inside Thread (IM) and Outside Thread (OM). **FEMALE COUPLING** is available with Hose End (HF), Inside Thread (IF) and Outside Thread (OF). The locking head is 'Universal' to all sizes.

MATERIAL SPECIFICATIONS

Steel as Standard with Plated finish. Brass or Stainless Steel to Special Order.

Seals

Standard 'o' ring seal is oil resistant rubber (Temp. range Minus 30C to 100C) Alternative Seal - Viton (-20°C to 200°C)

Threads

B.S.P. Standard
A.P.I. To Order
N.P.T. To Order

Working Pressures

Maximum safe recommended working pressure for Hose Ends depends on hose specification and type of hose clamps used - upto 50 Bar (725psi) is common.

Specification

Sizes 1/4" to 1" inclusive are interchangeable - any size of styles H.M., O.M. or I.M. will connect with any size of styles H.F., O.F. or I.F. within this range. When ordering give the size and style thus - 1/2" H.M. - 3/8" O.F.
Standard Range: 1/4", 3/8", 1/2", 3/4" and 1" sizes.
3/4" Bore Range: 1" Pipe thread or Hose Tail.
1" Bore Range: 1 1/4" & 1 1/2" Pipe thread or Hose tail.
1 1/2" Bore Range: 1 1/4" & 1 1/2" Pipe thread or Hose tail.
1 1/2" Bore Range: 2" Pipe thread or Hose tail.
All styles are interchangeable within each range.

A standard set of Fire Hose Couplings sized 3/4" HF and 3/4" HM are available.
Hose end tested to 100 Bar, when fitted with hydraulic swaged fittings. Screwed end tested to 140 Bar.

P
A
G
E

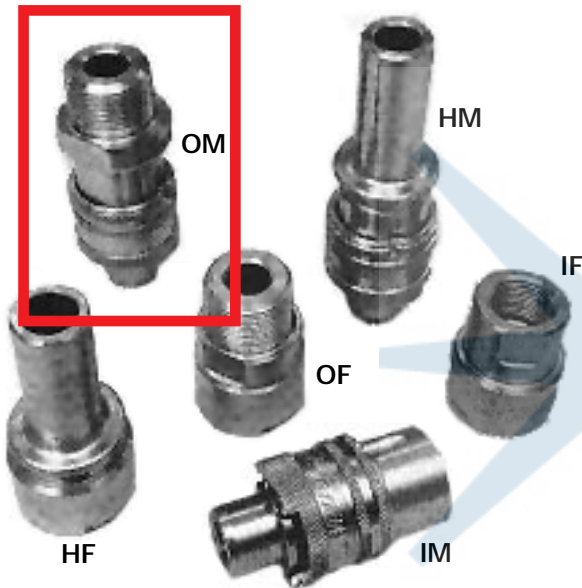
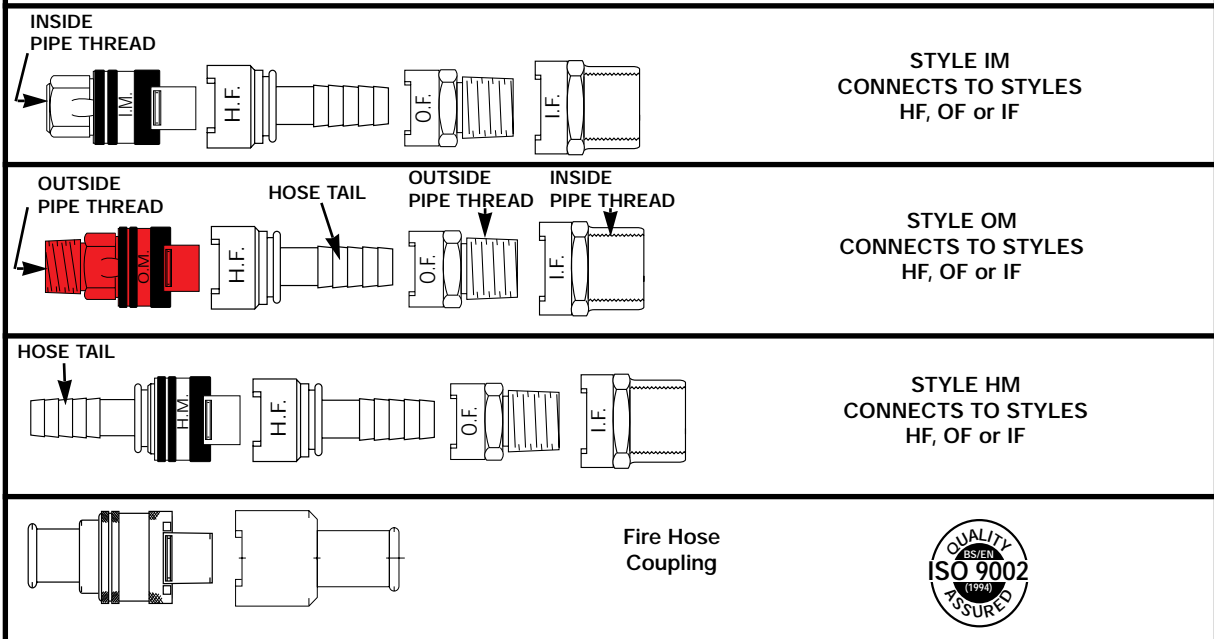


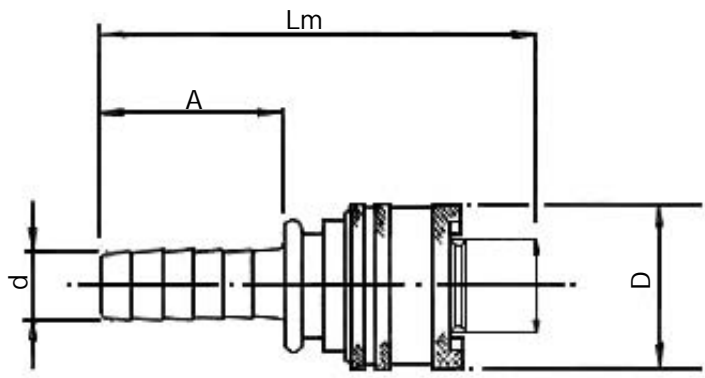
DIAGRAM TO SHOW ALL POSSIBLE COMBINATIONS OF THE VARIOUS STYLES OF COUPLINGS



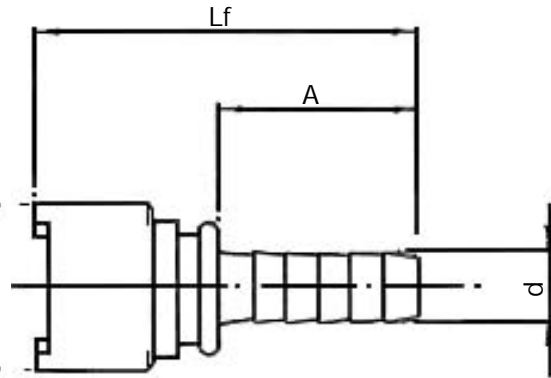
BACK TO

CATALOGUE

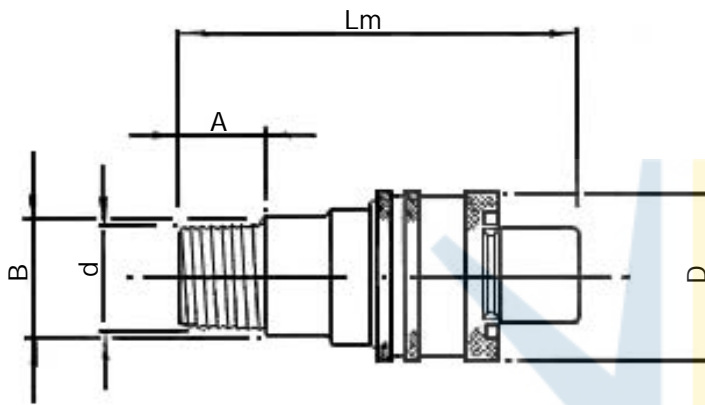
STYLE HM



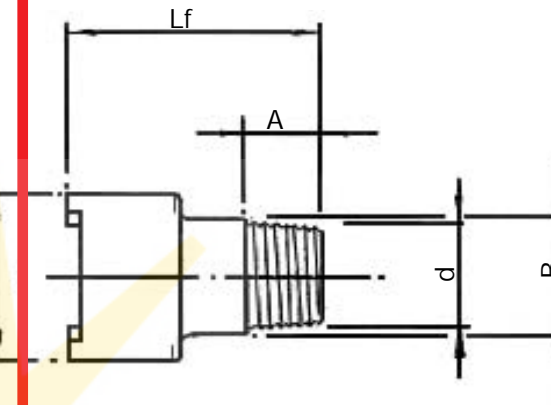
STYLE HF



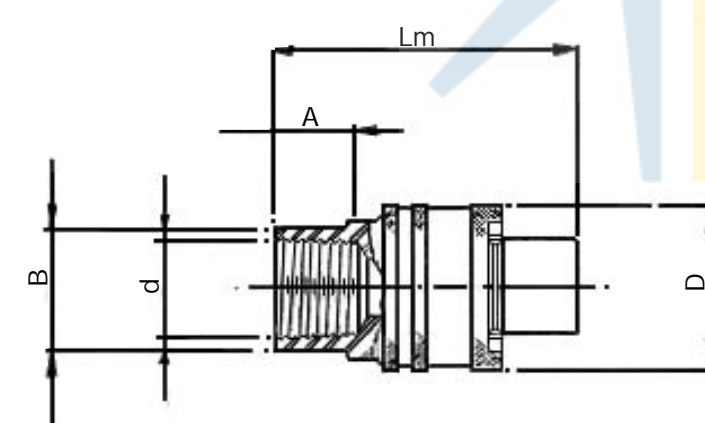
STYLE OM



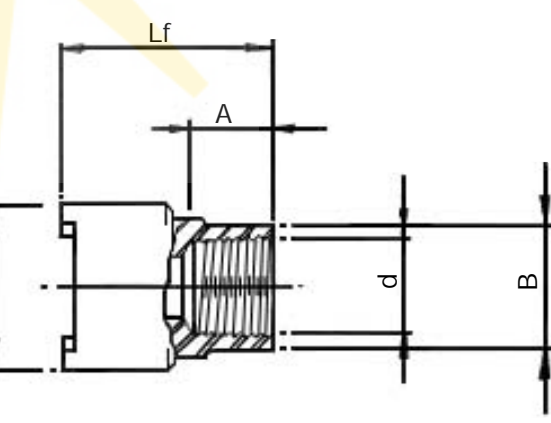
STYLE OF



STYLE IM



STYLE IF



P
A
G
E

BACK TO

CATALOGUE

STANDARD RANGE

- STYLE HM -

PART NO.	SIZE	A	D	d	Lm	BORE
992111	1/4	1.50	1.38	.31	3.75	.16
992121	3/8	1.50	1.38	.44	3.75	.25
992106	1/2	1.50	1.38	.58	3.91	.34
992108	3/4	1.75	1.38	.80	4.28	.50
992110	1	2.00	1.38	1.06	4.60	.50

- STYLE HF -

PART NO.	SIZE	A	D	d	Lf	BORE
902114	1/4	1.50	1.38	.31	2.81	.16
902124	3/8	1.50	1.38	.44	2.81	.25
902105	1/2	1.50	1.38	.58	3.00	.34
902107	3/4	1.75	1.38	.80	3.34	.50
902109	1	2.00	1.38	1.06	3.47	.69

- STYLE OM -

PART NO.	SIZE	A	D	d	Lm	BORE	B
992112	1/4	.56	1.38	1/4	3.19	.25	.92
992122	3/8	.63	1.38	3/8	3.19	.31	.92
992132	1/2	.69	1.38	1/2	3.19	.38	.92
992142	3/4	.75	1.38	3/4	3.50	.50	1.20
992152	1	1.00	1.38	1	3.75	.50	1.39

- STYLE OF -

PART NO.	SIZE	A	D	d	Lf	BORE	B
902115	1/4	.56	1.38	1/4	2.06	.25	.92
902125	3/8	.63	1.38	3/8	2.06	.31	.92
902135	1/2	.69	1.38	1/2	2.06	.38	.92
902145	3/4	.75	1.38	3/4	2.13	.50	1.10
902155	1	.88	1.38	1	2.25	.69	1.39

- STYLE IM -

PART NO.	SIZE	A	D	d	Lm	BORE	B
992113	1/4	.56	1.38	1/4	2.50	.42	.92
992123	3/8	.63	1.38	3/8	2.50	.50	.92
992133	1/2	.69	1.38	1/2	2.50	.50	1.01
992143	3/4	.75	1.38	3/4	3.25	.50	1.39
992153	1	1.00	1.38	1	3.81	.50	1.63

- STYLE IF -

PART NO.	SIZE	A	D	d	Lf	BORE	B
902116	1/4	.63	1.38	1/4	1.75	.42	.92
902126	3/8	.63	1.38	3/8	1.75	.55	.92
902136	1/2	.69	1.38	1/2	1.75	.63	1.01
902146	3/4	.75	1.38	3/4	1.88	.63	1.39
902156	1	1.00	1.76	1	2.19	.63	1.48

P
A
G
E

BACK TO

CATALOGUE

NOTES

- (a) Bore Dimension quoted is the minimum through bore of Coupling.
- (b) In Styles OM, OF, IM and IF:-
- d** Dimension quoted is a B.S.P. taper thread.
 - B** Dimensions quoted is the size across flats.
- (c) All Dimensions quoted are in inches.
- (d) Within each range:-
- Any size HM connects with any size HF, OF or IF.
Any size OM connects with any size HF, OF or IF.
Any size IM connects with any size HF, OF or IF.

**P
A
G
E**

MacDONALD STANDARD QUICK ACTION COUPLING DATA

- MATERIAL** : Standard Material Bright Mild Steel 25/28 T.T.
Metal parts are Zinc Plated except Springs and Clips which are manufactured from Stainless Steel.
- WORKING PRESSURE** : Recommended Working Pressure 10 to 1000 P.S.I.G.
Note: When using Hose Tail Couplings, pressure will be governed by method of Clamping Hose to Tailpiece, which must be such as will withstand pressure without blow-off.
- SEALS** : Standard seals are moulded from Nitrile Rubber suitable for general use with mineral oils, water and steam at temperatures between -30°C and +100°C.
Slow hardening occurs above approx. 100°C.

Couplings can be manufactured in alternative materials, e.g. Stainless Steel, Brass etc. for special applications.

Special Seals can be supplied for high temperature applications.

BACK TO

CATALOGUE