

FLUSH & TEST RIG

Hydrasun has built up considerable experience in the offshore oil and gas industry providing hydraulic control systems and solutions for subsea production systems and subsea wellheads.

Hydraulic rig for pressure testing and flushing small bore tubing and hoses

Our highly experienced engineers and technicians have the capability to design and manufacture hydraulic systems from flushing and testing units to hydraulic power units and control panels to meet customer's specific requirements.

The team has developed a series of standard flushing and high pressure testing rigs to cater for a large spectrum of hydraulic applications both onshore and offshore.

Capable of handling workshop temperatures up to 40°C, the rig has an ergonomically designed frame which can house a complete range of high quality pumps, valves and control systems to accommodate any application within the range listed. Specialised options, for example clip-on, clip-off tanks improve cycle time, while the Human-Machine Interface (HMI) controls facilitate remote handling.

Specification

Air Powered Hydro Test Pump

- Test Pressure up to 50,000 psi (3400 bar)
- Pressure control through adjustable air regulator
- Autoclave tubing and fittings
- High pressure safety relief valve protection

Electric Powered Flushing Pump

- Flushing flow up to 100 lpm
- Pressure up to 10000 psi (680 bar)
- Back pressure regulator control
- Safety relief valve protection
- Parker A-lok Fittings
- 25 micron Pressure Filter
- 1 x 10 micron and 2 x 3 micron return filter
- Air Blast Cooler

Control / Interface

- Stainless steel mimic control panel or HMI
- Panel mounted control valves
- Manual or automatic sample point
- Inline manual or electronic flow meter

Frame

- Steel painted frame or stainless steel
- Inbuilt drip tray
- Fork lift pocket, lifting lugs and castors

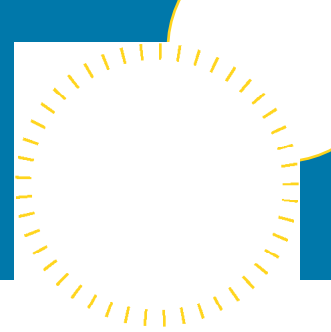
Documentation

- Operation and maintenance manual
- CE marking

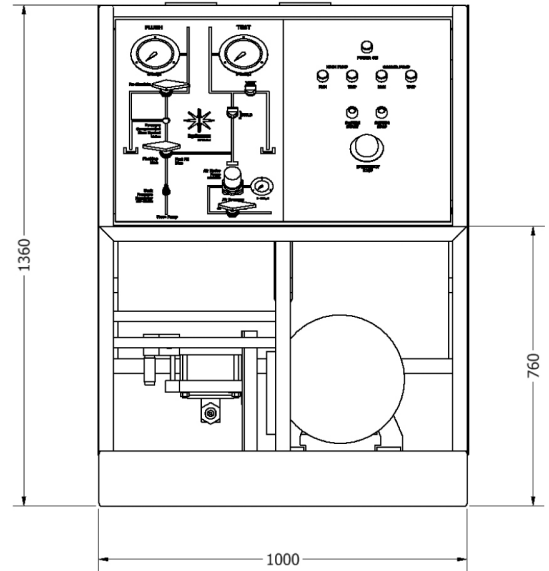
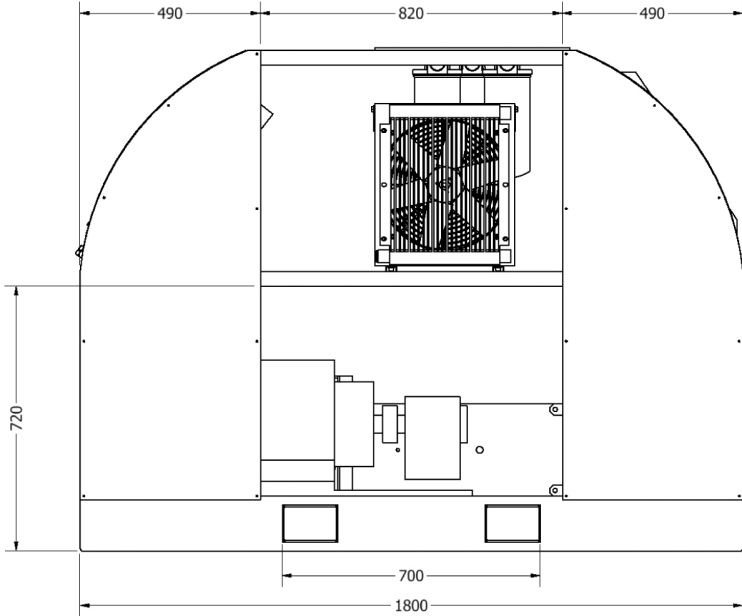
Options (Not Exhaustive)

- Digital chart recorders
- PLC control
- Automatic particle counter





Dimensions for Standard Model



Product Code	Pressure / Flow ranges	Code	Fluid	Code	Control	Code	Lifting and Mobility	Code	Extras	Code	Certification	Code
FR	20000psi HP, 5000psi x 21lpm FLUSH	S	Water Glycol (standard)	G	Manual (standard)	M	Lifting lugs	L	Automatic particle counter	AP	CE	CE
	Up to 50000psi HP Up to 1000psi or 100lpm FLUSH	CP	Light Oil	O	Pneumatic	P	Castors	C	Clip on tanks	CT	ATEX	A
	(quote code and required flows and pressures)		Special fluid including water, thick oil, etc	SF	HMI	H	Both	LC	Hose and tube blow back	BB	Lloyds (LAME 2009)	L
									HP fast fill	FF	DNV (rules for lifting)	D
									Fittings starter pack	SP		