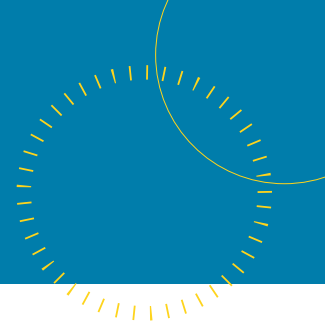


PORTABLE TEST UNIT - MODEL 8240 PTU



With Hydrasun's extensive High Pressure Testing and Flushing experience, we have developed a new range of standard test and flush equipment. Due to high demand from our customers, we extended this range to include Portable Testing Units.

Catering for a large spectrum of hydraulic testing both onshore and offshore, these units have been developed with controls that are intuitive and are based on a proven set-up for safety and control.

Capable of working in harsh environments, the unit has an ergonomically designed frame which houses a compact high quality Autoclave pump that can test to very high pressures.

Hydrasun can supply this unit in different configurations for any high/medium and low pressure bespoke application.

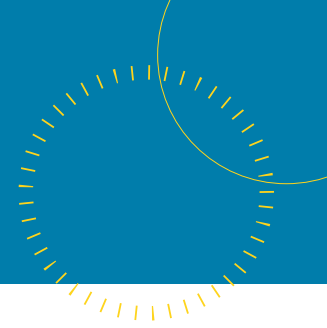
PERFORMANCE DATA	
Max Rated Outlet Pressure	26,900 psi (1855 bar)
Volume Displacement per Stroke	0.22in ³ (3.6cm ³)
Max Flow	47.5in ³ / min
Max Air Supply Pressure	100psi (7 bar)
Ratio	1:265
Air Consumption	@ 90psi: 69 SCFM
Air to Liquid pressure Ratio	1:256
Tank Capacity	5 Litres (Plus Auxiliary Inlet)

CONSTRUCTION & FEATURES	
Frame	304 Stainless Steel
Dimensions (LxDxH)	451mm x 376mm x 676mm
Weight	35Kg (Tank Full)
Tank	5 Litres (Light Weight Plastic)
Hydraulic Pressure Gauge	0-35,000psi Panel Mounted
Air Pressure Gauge	0-160psi Panel Mounted
Air Regulator	0.5-7 Bars
Auxiliary Tank Inlet	Fluid Source Select via 3-Way Ball Valve
Vent Valve	Systems Pressure Release to Tank

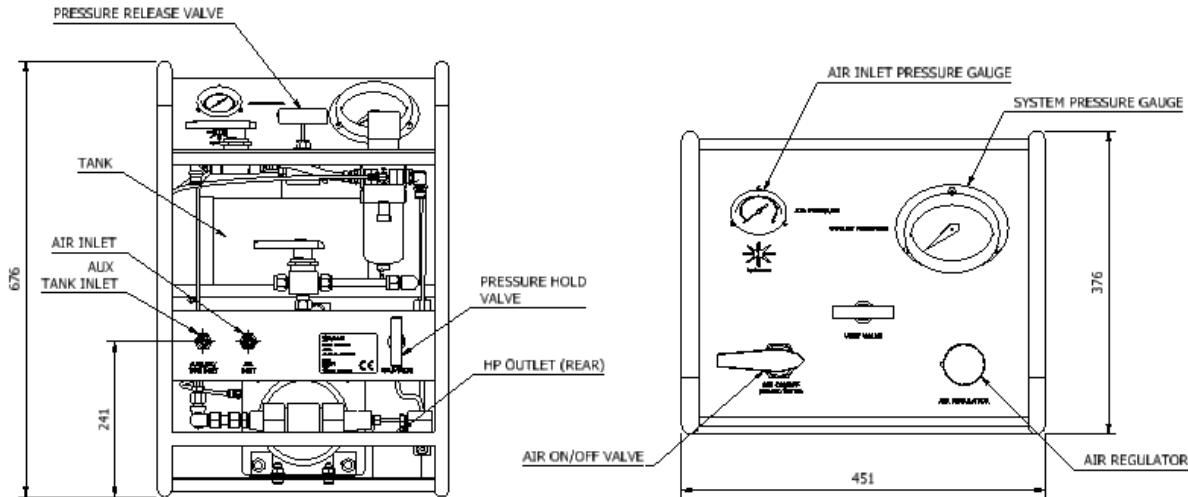
BULKHEAD PANEL CONNECTORS	
Air Inlet	JIC 8 (JIC to BSPP Female Optional)
Auxiliary Tank Inlet	JIC 8
HP Fluid Outlet	¼" HP Autoclave
Hold Valve	¼" HP Needle Valve - 30,000psi



PORTABLE TEST UNIT- MODEL 8240 PTU

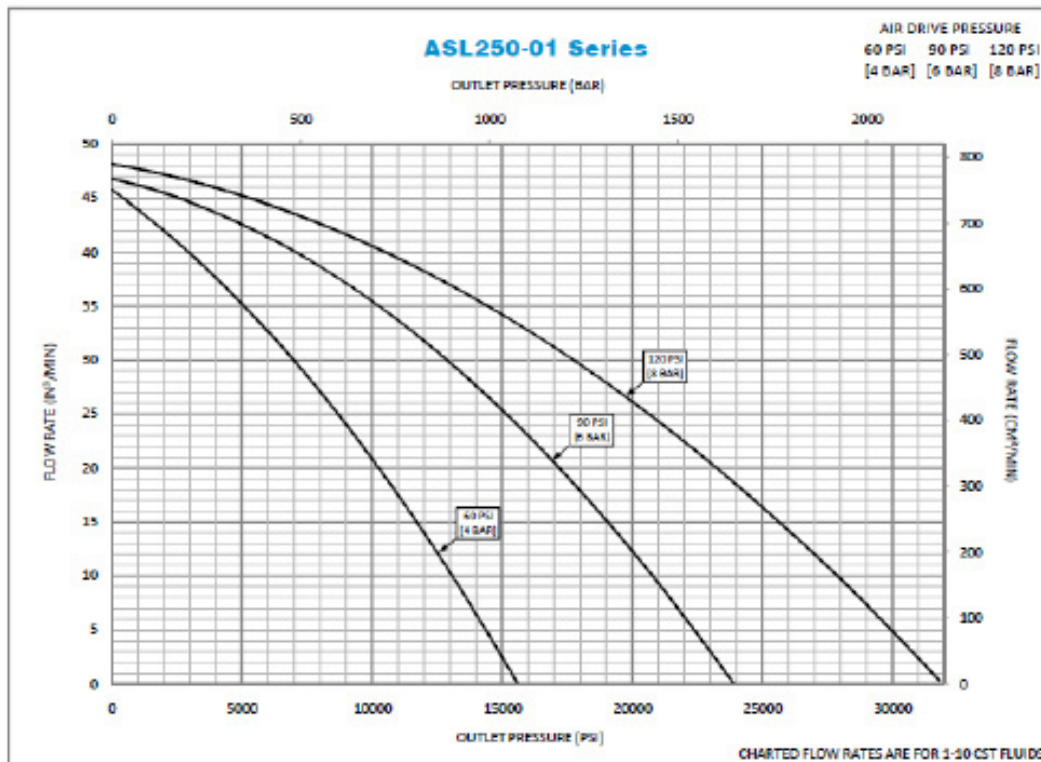


GENERAL LAYOUT DRAWING



FLOW CURVE

Flow Rate vs Outlet Pressure



Actual flow rates will vary depending on air flow capacity, downstream flow restrictions and fluid type